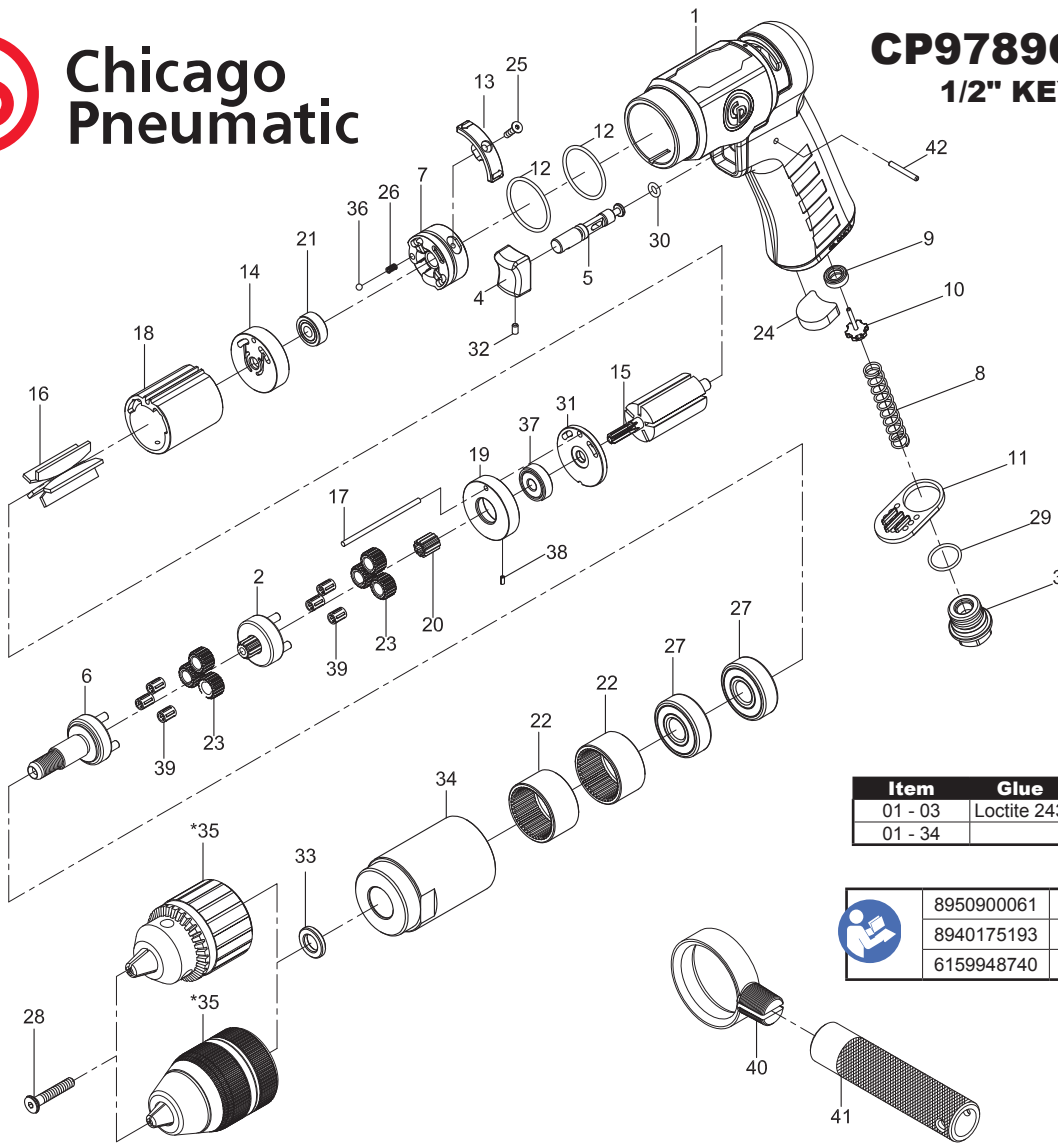




**Chicago  
Pneumatic**

**CP9789C & CP9791C**  
**1/2" KEY & 1/2" KEY LESS**  
**DRILL**  
**Serie D**



Item	Glue	Tightening torque
01 - 03	Loctite 243	↻ 7.3 ft.lb - 10 Nm
01 - 34		↻ 40.6 ft.lb - 55Nm

	8950900061	Warning Label
	8940175193	Operator's Manual
	6159948740	Safety Instructions

Ref	CP Part No.	Description	Q'ty
<b>A</b>	<b>8940175265</b>	<b>Throttle Kit</b>	
8		Spring	1
9		Valve Seal	1
10		Valve	1
<b>B</b>	<b>8940175266</b>	<b>Inlet Kit</b>	
3		Air Inlet	1
11		Silencer	1
29		O-Ring	1
<b>C</b>	<b>8940175295</b>	<b>Motor Housing Kit</b>	
1	8940175234	Motor Housing with grip	1
4		Trigger	1
5		Valve Stem	1
30		O-Ring	1
32		Stem Screw	1
42		Pin	1
<b>D</b>	<b>8940175267</b>	<b>Trigger Kit</b>	
		Include 4,5,30,32 & 42	
<b>E</b>	<b>8940175268</b>	<b>Regulator Kit</b>	
7		Distributor	1
12		O-Ring	2
13		Reversibility Button	1
25		Screw	1
26		Spring	1
36		Steel Ball (3mm)	1
<b>F</b>	<b>8940175269</b>	<b>Rear End Plate</b>	
14		Rear End Plate	1
21		Ball Bearing (606zz)	1
<b>G</b>	<b>8940175270</b>	<b>Front Plate Kit</b>	
17		Pin	1
19		Front End Plate	1
31		End Plate	1
37		Ball Bearing (626ZZ)	1
38		Spring Pin	1

Ref	CP Part No.	Description	Q'ty
<b>H</b>	<b>8940175274</b>	<b>Gearbox Kit</b>	
2		Reduction Spindle	1
6		Work Spindle	1
22		Internal Gear	2
20		Pinion Gear	1
23		Planet Gear	6
39		Needle Bearing	6
<b>I</b>	<b>8940175289</b>	<b>Service Gear Set</b>	
		Include 20, 23(x6) & 39(x6)	
<b>J</b>	<b>8940175275</b>	<b>Side Handle Kit</b>	
40		Retainer	1
41		Handle	1
<b>SP</b>	<b>8940175259</b>	<b>Small Parts Kit</b>	
		Include 3, 11,13,17, 24, 26, 28, 32, 33, 36, 38 & 42	
<b>TK</b>	<b>8940175273</b>	<b>Tune-Up Kit</b>	
		Include 9,12(x2),16 & 30	

15	2050485903	Rotor	1
16	2050485913	Rotor Blades (Set of 5)	1
18	2050485933	Cylinder	1
27	2050486953	Ball Bearing (6201Z)	2
34	2050485413	Clamp Nut	1
*35	2050486963	Industrial Key Chuck (1/2") & Key(Not Shown) For CP9789C	1
	2050502073	Industrial Keyless Chuck (1/2") For CP9791C	1

\*Optional parts

**Recommended Accessories**



Protecto-lube Oil (for air lubrication)  
CA149661 (4 oz - 0.12 l)  
CA000046 (20 oz - 0.59 l)



Airoilene Oil (to clean motor parts)  
P089507 (1 gal - 3.8 l)